



TEREX® | FINLAY



T-LINK™

FLEET MANAGEMENT SYSTEM

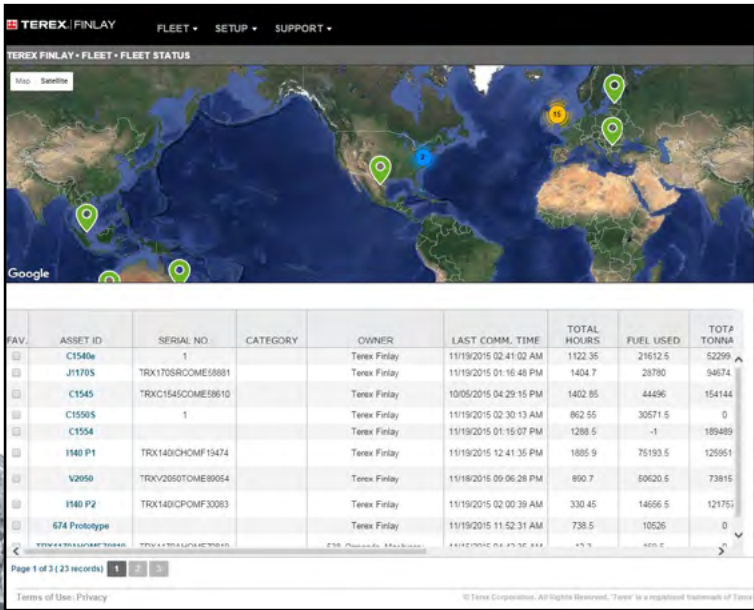


WORKS FOR YOU.™

PLAN, RUN AND MANAGE YOUR FLEET TO GROW YOUR BUSINESS

T-Link is the Terex|Finlay remote monitoring, fleet management system that combines your machines' inbuilt CANbus control system with satellite positioning and telematics software.

From the fleet management fundamentals of knowing the hours and location of your machine to sending machine specific alerts and tracking machine production, T-Link can help you remotely monitor and manage your Terex|Finlay fleet and grow your business.



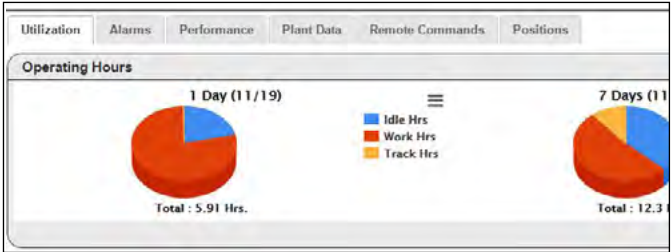
WHY USE T-LINK

T-Link enables you to stay connected and keep track of your equipment, monitor work progress, manage logistics, access critical machine information, analyse and optimise machine performance and perform remote operator support.

Users can access T-Link to view their specific machine data via the internet using their computer, smart phone or tablet even in near real-time.

T-LINK PROVIDE A NUMBER OF KEY FEATURES, INCLUDING:

ENHANCED MACHINE UPTIME



By keeping an eye on the time your machines spend idling, working and tracking from one location to another, T-Link will help you maximise your operations.

- Accurate engine hours monitoring.
- Planning routine preventative maintenance and servicing
- Enhanced dealer support.

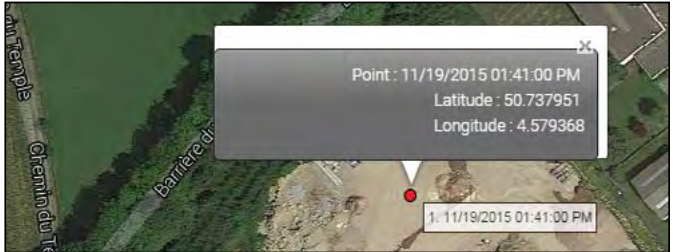
ENHANCED FLEET MANAGEMENT

Alarm Details	Alarm Code	Description	Alarm Date	Location
Engine	1	Engine fault	11/19/2015 12:41:35 PM	11/19/2015 12:41:35 PM
Engine	2	Engine fault	11/19/2015 12:41:35 PM	11/19/2015 12:41:35 PM
Engine	3	Engine fault	11/19/2015 12:41:35 PM	11/19/2015 12:41:35 PM
Engine	4	Engine fault	11/19/2015 12:41:35 PM	11/19/2015 12:41:35 PM
Engine	5	Engine fault	11/19/2015 12:41:35 PM	11/19/2015 12:41:35 PM
Engine	6	Engine fault	11/19/2015 12:41:35 PM	11/19/2015 12:41:35 PM
Engine	7	Engine fault	11/19/2015 12:41:35 PM	11/19/2015 12:41:35 PM
Engine	8	Engine fault	11/19/2015 12:41:35 PM	11/19/2015 12:41:35 PM

The T-Link system allows you to access engine service codes from a centralised location. As a result you can implement performance enhancement adjustments or upskill your operators to improve efficiency.

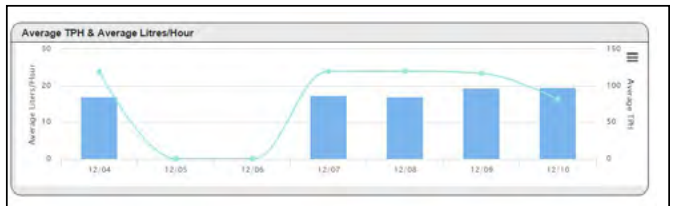
- Fuel economy reporting. (Cost per tonne if Belt-weigh fitted)
- Idle time/ Working time monitoring.
- Engine load recording.
- Fleet management reporting.
- Utilisation reporting.

ENHANCED SECURITY AND VISIBILITY



- Near real time machine location.
- Geo-fencing of machine location.
- History of machine movements

MINIMISE COSTS



By providing fuel consumption analysis (e.g. fuel levels and total daily production costs) T-Link enables you to lower your machine operational energy costs.



HOW DOES T-LINK WORK?

1. The system operates on dual-band networks that utilises both cellular and global positioning satellites (GPS) technologies to connect you with your machine in the field.
2. The T-Link components and software on your machine collects machine data and transmits it to the satellite.
3. The communication network transmits information to the T-Link data centre.
4. The T-Link data centre stores harvested data for the life time of the equipment.
5. Data can be accessed from the machine in near time via the internet from the T-Link data center on your computer, smart phone or tablet.



DATA AT YOUR FINGERTIPS 24 / 7 / 365 DAYS

The T-Link system is connected to a network of global positioning satellites allowing operators to access and download machine data regularly via cellular and satellite once the system is activated on the machine.

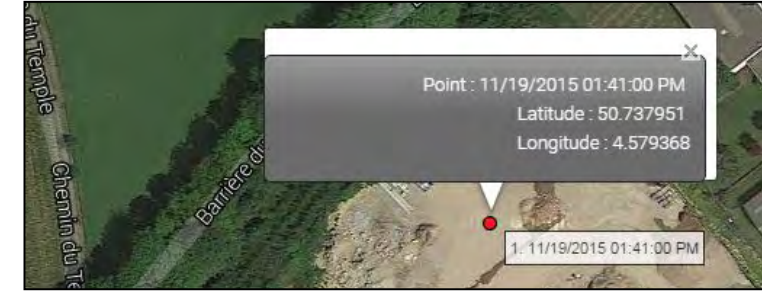
To access machine data, simply log onto the web-based portal and download the data that you require for indepth analysis and comparison.

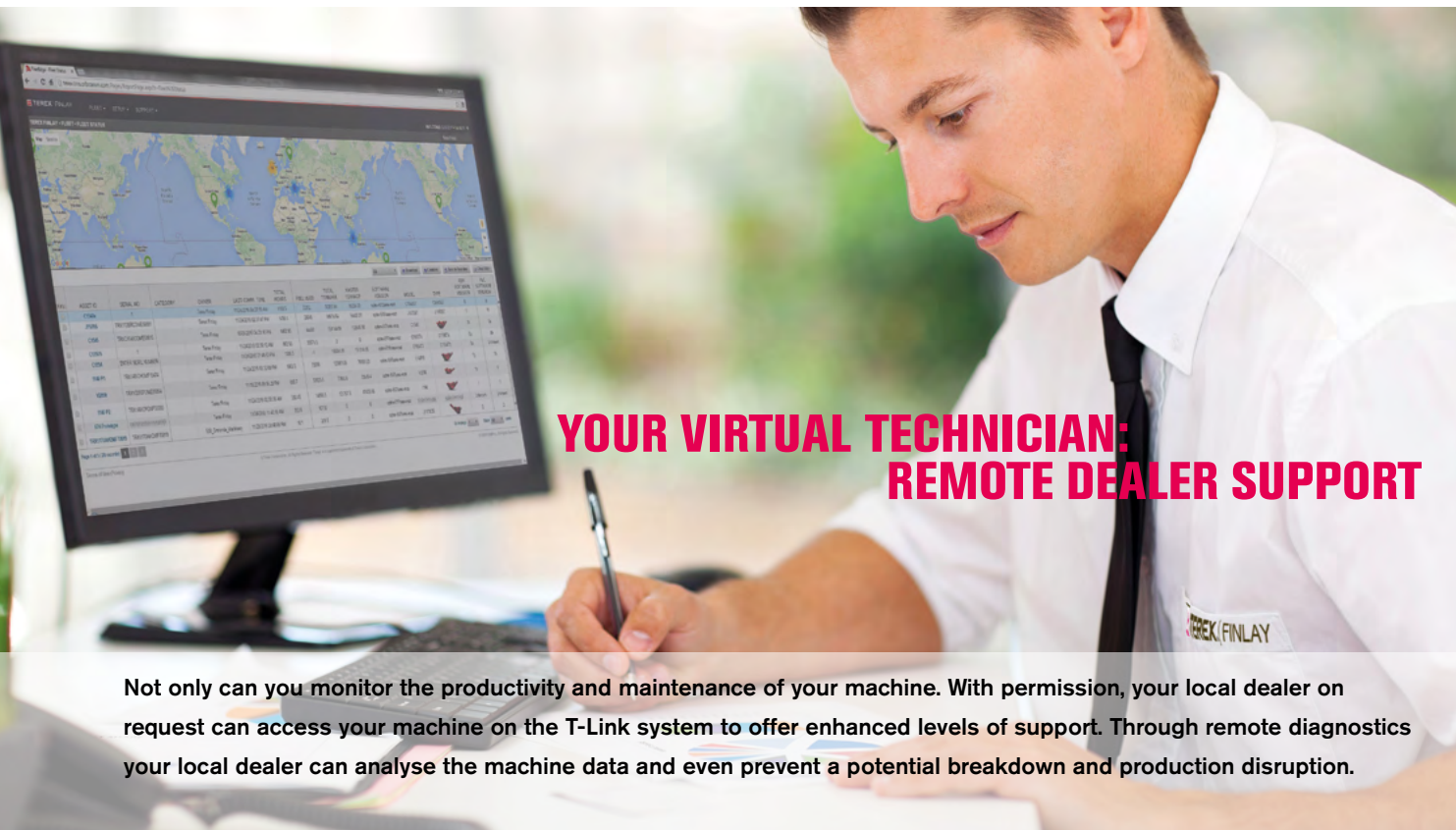
T-Link gives you immediate access and more control over your equipment by providing you with critical and time specific information.



MACHINE LOCATION ACTIVITY

Are you sure your machine is where it's supposed to be? T-Link utilises a network of Global Positioning Satellites (GPS). The current position of your machine can be monitored using the map or latitude and longitude references. This information will assist you with both logistics and scheduled maintenance.



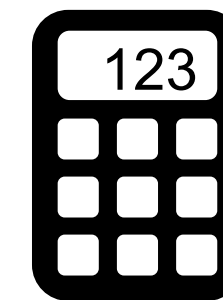
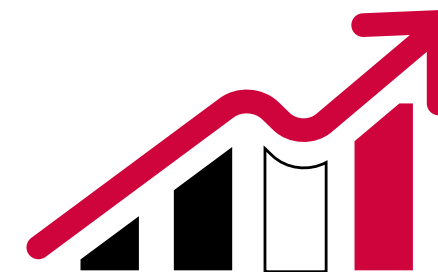
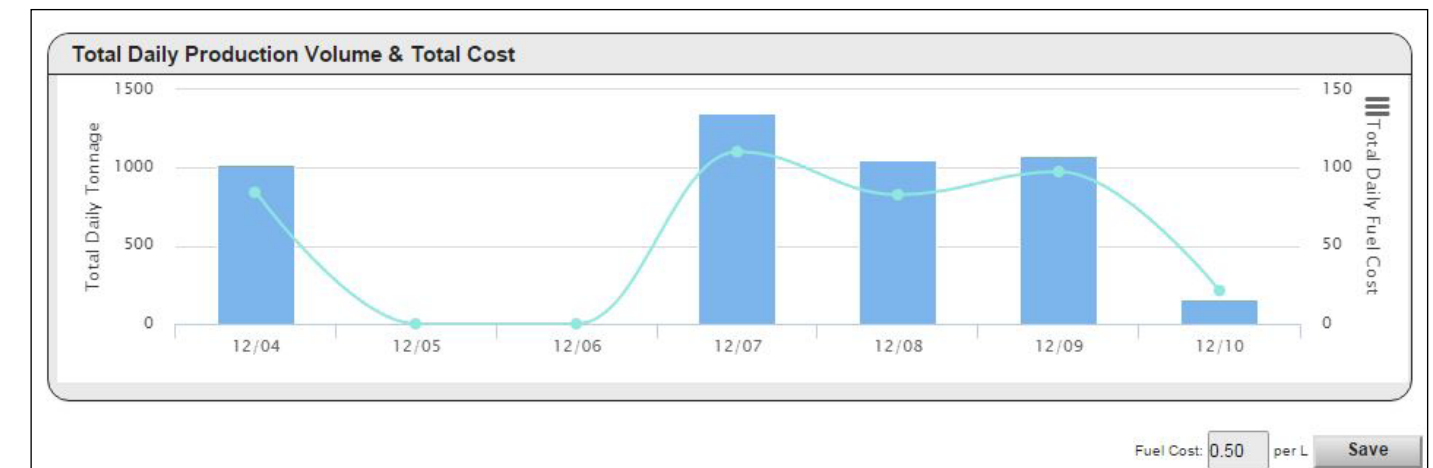


YOUR VIRTUAL TECHNICIAN: REMOTE DEALER SUPPORT

Not only can you monitor the productivity and maintenance of your machine. With permission, your local dealer on request can access your machine on the T-Link system to offer enhanced levels of support. Through remote diagnostics your local dealer can analyse the machine data and even prevent a potential breakdown and production disruption.

IS YOUR MACHINE GENERATING THE PROFITABILITY YOU EXPECTED?

T-Link provides near real time data about your machine so that you can proactively manage and respond quickly. To establish just how profitable your machine really is you need to know precisely how much fuel is being use on a daily basis and the total tonnage output. T-Link gives this information remotely enabling you to establish how productive your machine really is.



WORKING STATUS REPORT

T-Link provides you with an accurate working record in near real time of the operational performance of your machine and helps you to monitor the health of your machine and schedule preventative maintenance. The information and reports that can be downloaded include:

- ✓

LOCATION
- ✓

FUEL CONSUMPTION
- ✓

CAUTIONS AND ALERTS
- ✓

OPERATION STATUS
- ✓

ENGINE LOAD LEVELS
- ✓

CONE LINER WEAR UPDATES
- ✓

WORKING STATUS
- ✓

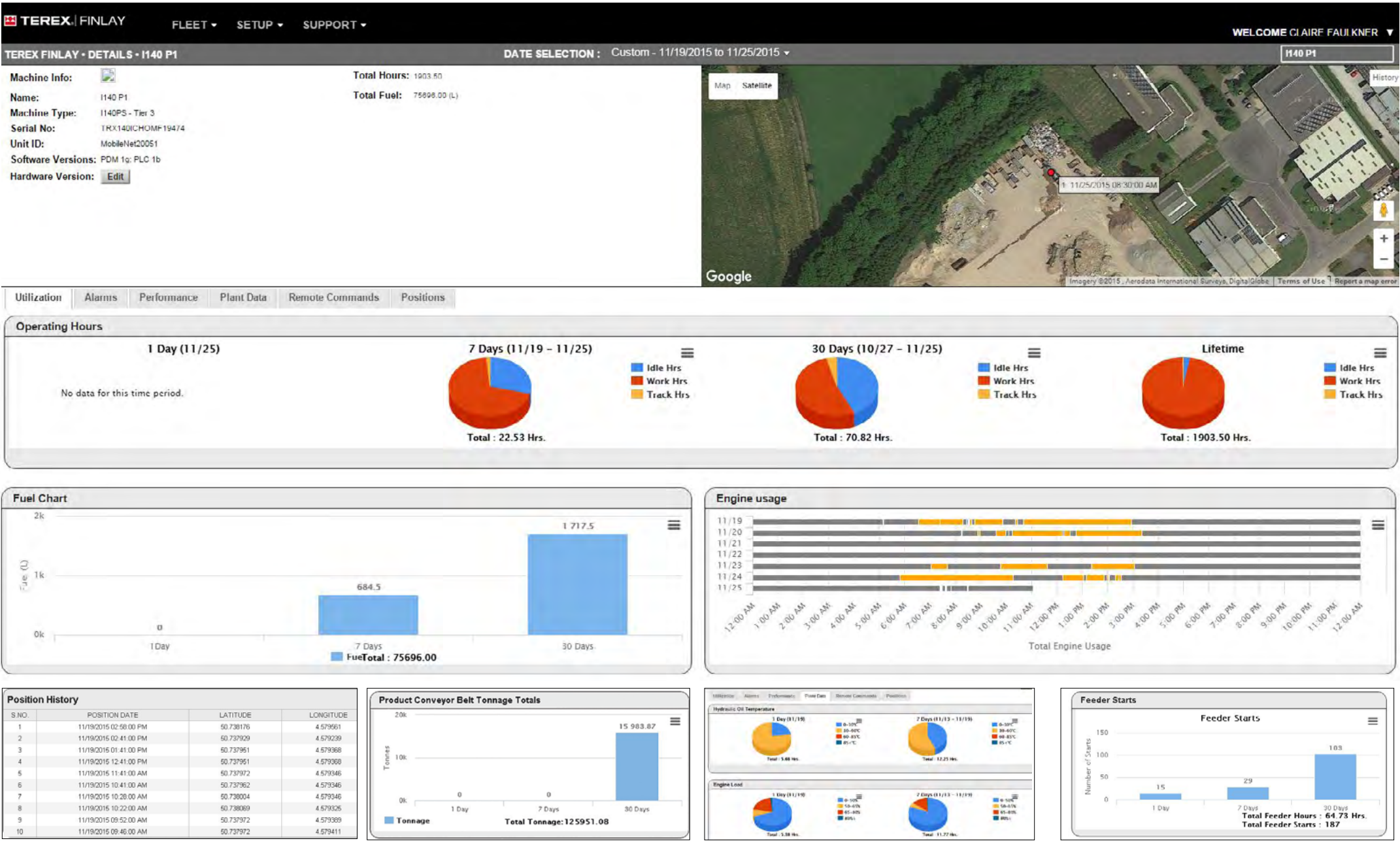
MAINTENANCE REPLACEMENT AND NOTIFICATIONS
- ✓

ENGINE WORK TIME
- ✓

TONNAGE OUTPUT (WHEN ALIGNED TO A CALIBRATED BELT WEIGHER)
- ✓

ENGINE IDLE TIME

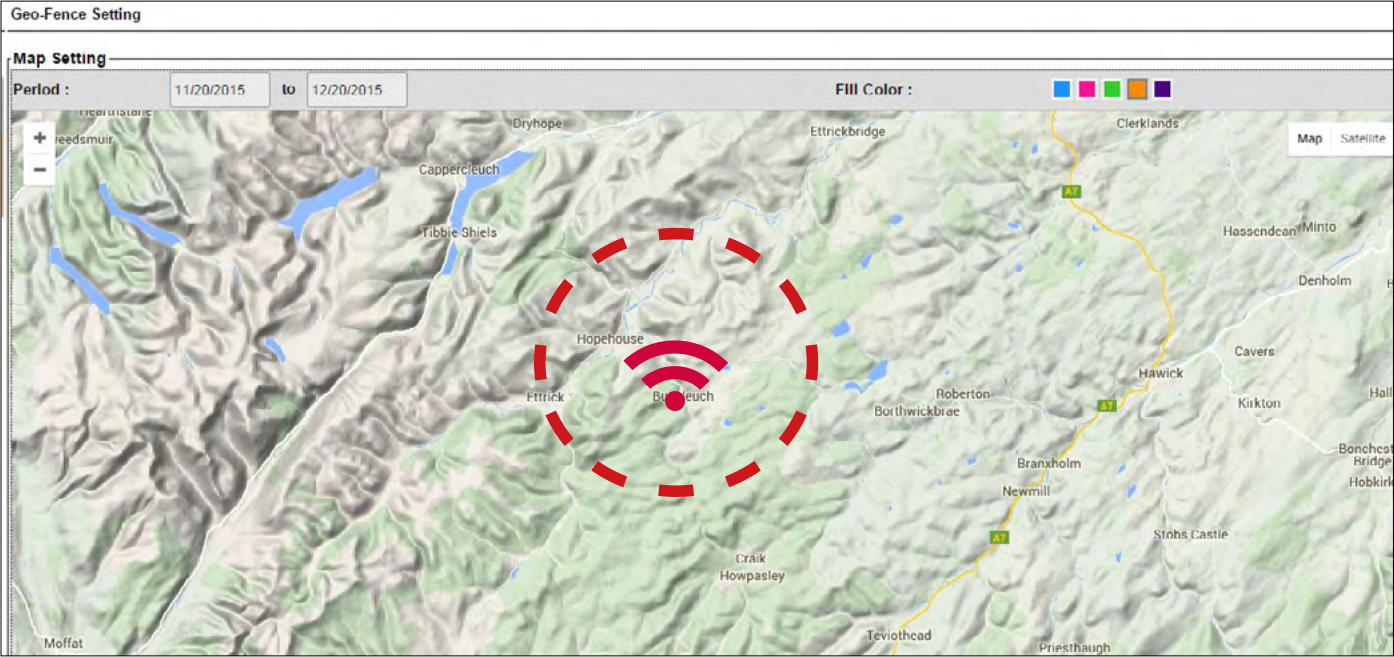
“T-Link takes the guesswork out of machine monitoring and performance optimisation”.



GEOFENCING & OUT-OF-HOURS

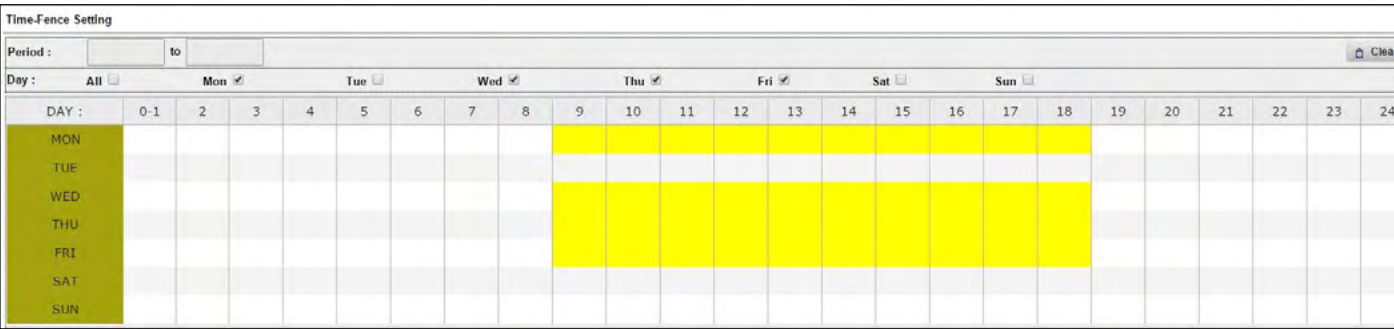
GEOFENCE

T-Link enables you to set Geofences, or a virtual perimeter around your machines. T-Link enables fleet owners to draw zones around the location where your machine is working. If your machine crosses the geo-fence the system triggers an alert notification that is sent to the owner.



TIMEFENCE

T-link also enables owners to place time-based rules of when machines should be operational. The system will not shut down the machine, but will trigger an alert notifying you of any violations.



In Summary, geofencing can help you manage your business by alerting you to exceptional or prohibited behaviour - **KEEPING YOU ONE STEP AHEAD.**



FLEET MANAGEMENT SYSTEM



ENABLES YOU TO
**MANAGE YOUR
ENTIRE FLEET**
FROM YOUR DESKTOP
OR MOBILE DEVICE

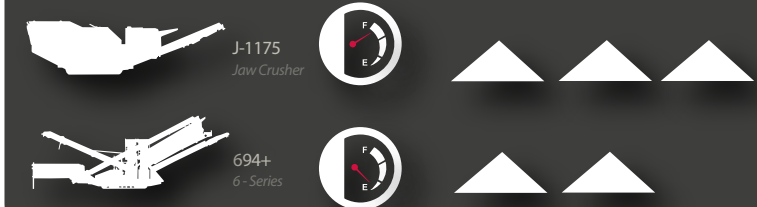


J-1175
Jaw Crusher

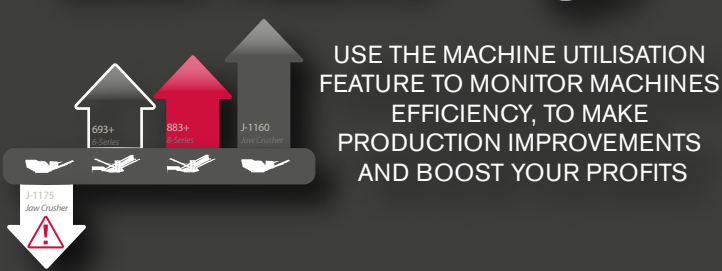
GIVES YOU
ANYTIME REMOTE ACCESS
TO MACHINE HOURS AND LOCATION,
FUEL CONSUMPTION, IDLE TIME,
MAINTENANCE REMINDERS, AND MORE

PRODUCTION COSTS

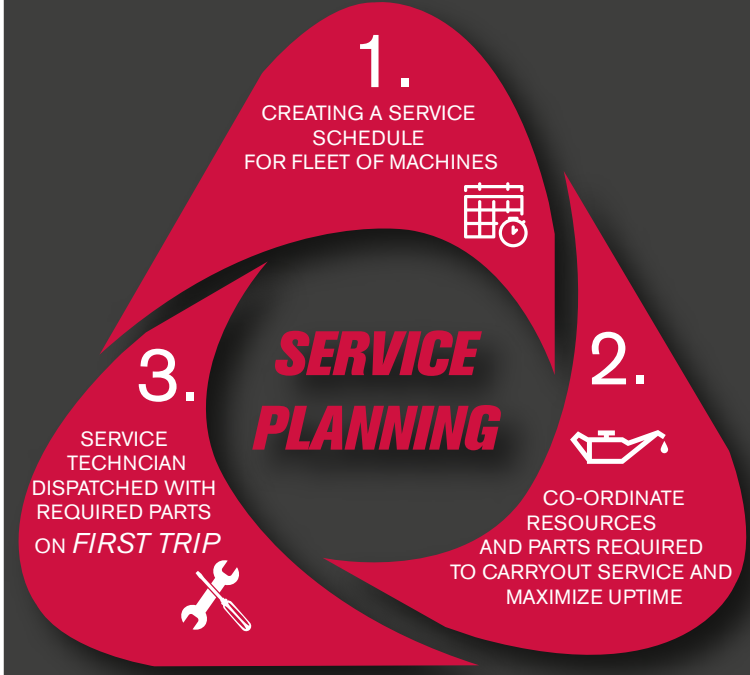
T-LINK PROVIDES ACCURATE INFORMATION TO HELP
YOU BETTER UNDERSTAND YOUR TRUE PRODUCTION COSTS



BOOST PROFITS



MACHINE SCHEDULING



MACHINE DIAGNOSTIC



GEOFENCE AND TIMEFENCE ALERTS

FOR FURTHER INFORMATION CONTACT:

E. finlay.tlink@terex.com

Follow us on:



www.terexfinlay.com

Effective January 2015. Product specifications and prices are subject to change without notice or obligation. The photographs and/or drawings in this document are for illustrative purposes only. Refer to the appropriate Operator's Manual for instructions on the proper use of this equipment. Failure to follow the appropriate Operator's Manual when using our equipment or to otherwise act irresponsibly may result in serious injury or death. The only warranty applicable to our equipment is the standard written warranty applicable to the particular product and sale and Terex GB Ltd. makes no other warranty, express or implied. Products and services listed may be trademarks, service marks or trade-names of Terex Corporation and/or its subsidiaries in the USA and other countries. All rights are reserved. Terex® is a registered trademark of Terex Corporation in the USA and many other countries. Copyright 2010 Terex GB Ltd.



WORKS FOR YOU.™