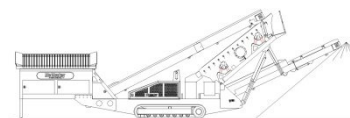


S130 3-Deck RINSER



SPECIFICATIONS



DESCRIPTION

Heavy duty mobile screener with following features:

- 14x5 heavy duty high energy 3 deck 2 bearing rinser screenbox.
- 100Hp Cat engine.
- Track or wheel mobile.
- Integrated hydraulic folding stockpiling conveyors.
- Remote control tipping grid.
- Fast on site setup time – 10 minutes.
- Recommended flow and pressure
 - o 3800 to 4500 lpm (1000 to 1200 us gal/min)
 - o 1.75 to 2 bar (25 to 30 psi)

DIMENSIONS AND WEIGHTS

Length - transport

12ft Hopper 15.61m (51' - 2")

15ft hopper 16.52m (54'2")

Width – transport

500mm aux conv 3.060m (9' - 10")

650mm Aux conv. 3.24m (10'8")

Height - transport 3 deck track 3.45m (11' - 4")

Height - transport 3 deck wheel 3.73m (12' - 3")

Weight - track 29,000 Kgs (63,933 lbs) - estimated

Weight - wheel 25,000 Kgs (55,115 lbs) - estimated

CAPACITIES

Diesel tank capacity 399 L (105 US gal)

Hydraulic tank capacity 630 L (166 US gal)

Capacity - 12ft hopper 8.01 m³ (10.48 yd³)

FEED CONVEYOR

Belt width 1200mm (48")

Belt spec Plain 500/3 6+3

Drive drum dia. 335mm (13.1")

Tail drum dia. 320mm (12.5")

Gearbox Bonfig 805 W2

Gearbox ratio 24.2

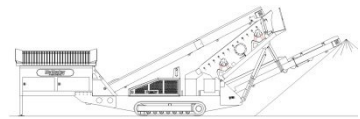
Gearbox torque 7000Nm cont, 12500Nm max

Motor Danfoss OMSS160

Flow rate 50.6 Lpm (13.4 US gpm)

Adjustable speed YES

Maximum speed 13.1 rpm



MAIN CONVEYOR

Belt width	1050mm (42")
Belt spec	Plain 400/3 6+1.5
Drive drum dia.	285mm (11.2")
Tail drum dia.	270mm (10.6")
Motor	Danfoss OMV630
Flow rate	72.6 Lpm (19.2 US gpm)
Adjustable speed	OPTION
Maximum speed	115.2 rpm

SIDE CONVEYOR

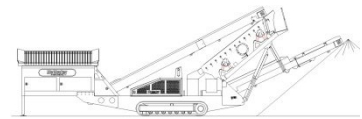
Stockpile height - track model	4600mm (15' - 1")
Stockpile height - wheel model	4870mm (15' - 11")
Belt width	650mm (26")
Belt spec	Chevron - 400/3 6+1.5
Drive drum dia.	285mm (11.2")
Tail drum dia.	270mm (10.6")
Motor	OMT400
Flow rate	50.6 Lpm (13.4 US gpm)
Adjustable speed	YES
Maximum speed	126.5 rpm

3 DECK TRANSFER CONVEYOR

Belt width	650mm (26")
Belt spec	Plain 400/3 4+2
Drive drum dia.	200mm (8")
Tail drum dia.	200mm (8")
Motor	OMT400
Flow rate	50.6 Lpm (11.1 gpm)
Adjustable speed	YES
Maximum speed	126.5 rpm

3 DECK AUXILLARY CONVEYOR

Stockpile height - track model	4700mm (15.5')
Belt width	500mm (20")
Belt spec	Chevron - 400/3 6+1.5
Drive drum dia.	290mm (11.5")
Tail drum dia. (Spoked)	270mm (10.6")
Motor	OMT400
Flow rate	50.6 Lpm (11.1 gpm)
Adjustable speed	YES
Maximum speed	126.5 rpm



SCREENBOX

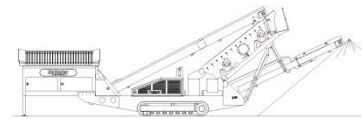
Dimensions - top deck	4270mm x 1524mm (14' x 5')
Dimensions - middle deck	4270mm x 1524mm (14' x 5')
Dimensions - bottom deck	3660mm x 1524mm (12' x 5')
Bearing type 3 Deck	NSK/RHP 22319 - 95mm bore
Screens - top deck	5' x 4' side tension - 3 off & 5' x 2' side tension - 1 off
Screens - middle deck	5' x 4' side tension - 3 off & 5' x 2' side tension - 1 off
Screens - bottom deck	5' x 6' end tension - 2 off
Tensioning - top deck	Quick release pin and wedge
Tensioning - middle deck	Quick release pin and wedge
Tensioning - bottom deck	Curved tension bar and adjuster
Screen angle	25 to 34 deg
Screen motor	DBH MCC2208 (58.9cc/rev)
Drive system	Direct drive with HRC180 coupling
Hydraulic flowrate	72.6 Lpm (19.2gpm)
Speed adjustable	YES - Pressure compensated FCV
Screen stroke adjustable	6 - 10mm maximum
Screen shaft speed	1130 - 950 rpm
Screen 'g' force	4.29 - 5.05

POWERUNIT AND HYDRAULICS

Engine	CAT 4.4 (Tier III)
Engine power	100 HP
Engine speed	2200 rpm
Flywheel Pump 1	DBH 5033,5033
LH PTO Pump 2	DBH 5023,5023
RH PTO Pump 3	DBH 2SPA11
Total system flow	289 L (76.3 US Gpm)
Hydraulic tank capacity	630 L (166 US Gals)
Hydraulic tank ratio	2.18 : 1
Hydraulic Oil cooler	YES

ELECTRICS

Emergency stops	6 off, 1 feeder, 2 powerunit RH&LH, 2 chassis front RH&LH, 1 Walkway
Chassis cabling	Armored cable
Start Siren	YES - 10 sec delay
Engine shutdowns:	Low oil pressure High water temp Air filter blockage (selectable) Fuel contamination Low hydraulic tank level
Engine room light	YES
Remote tipping grid	YES - 2 function timed
Radio control tracks	optional - Hetronic system
Pendant track control	YES - plugged in at feeder end



TRACKS

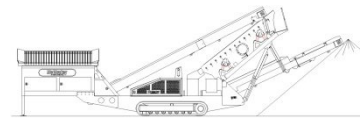
Width	500mm (19.7")
Length	2920mm (9' - 7") crs
Height	739mm (29.4")
Gearbox	Bonfiglioli 707
Ratio	122:1
Motor	Rexroth 63
Speed max	1.32 Kph (0.82 Mph)
Flow rate	72.6 Lpm (19.2 US gpm)
Dual speed	TBC
Attachment to chassis	Bolt On for quick change

RINSE KIT

Main water supply pipe	150mm (6") diameter
Wash box lining	25mm (1") rubber wear lining
Wash box spray pipe	6 brass nozzles 200/80
Top deck spray pipes	6 off
Top deck spray nozzles	33 off 8mm Meister Uni-Duse adjustable
Bottom deck spray pipes	6 off
Bottom deck spray nozzles	33 off 8mm Meister Uni-Duse adjustable
Bottom deck Catchbox	6mm (1/4") rubber lined
Bottom deck exit	255mm (10") diameter flange 2 off

WHEELS

Width	2900mm (9' - 6")
Axle centers	1360mm (4' - 6")
Wheels	235/75/R17.5 dual
Axles	2 off
Brakes	YES
Spring suspension	YES
Mudguards	YES
Handbrake	OPTION
ABS	OPTION

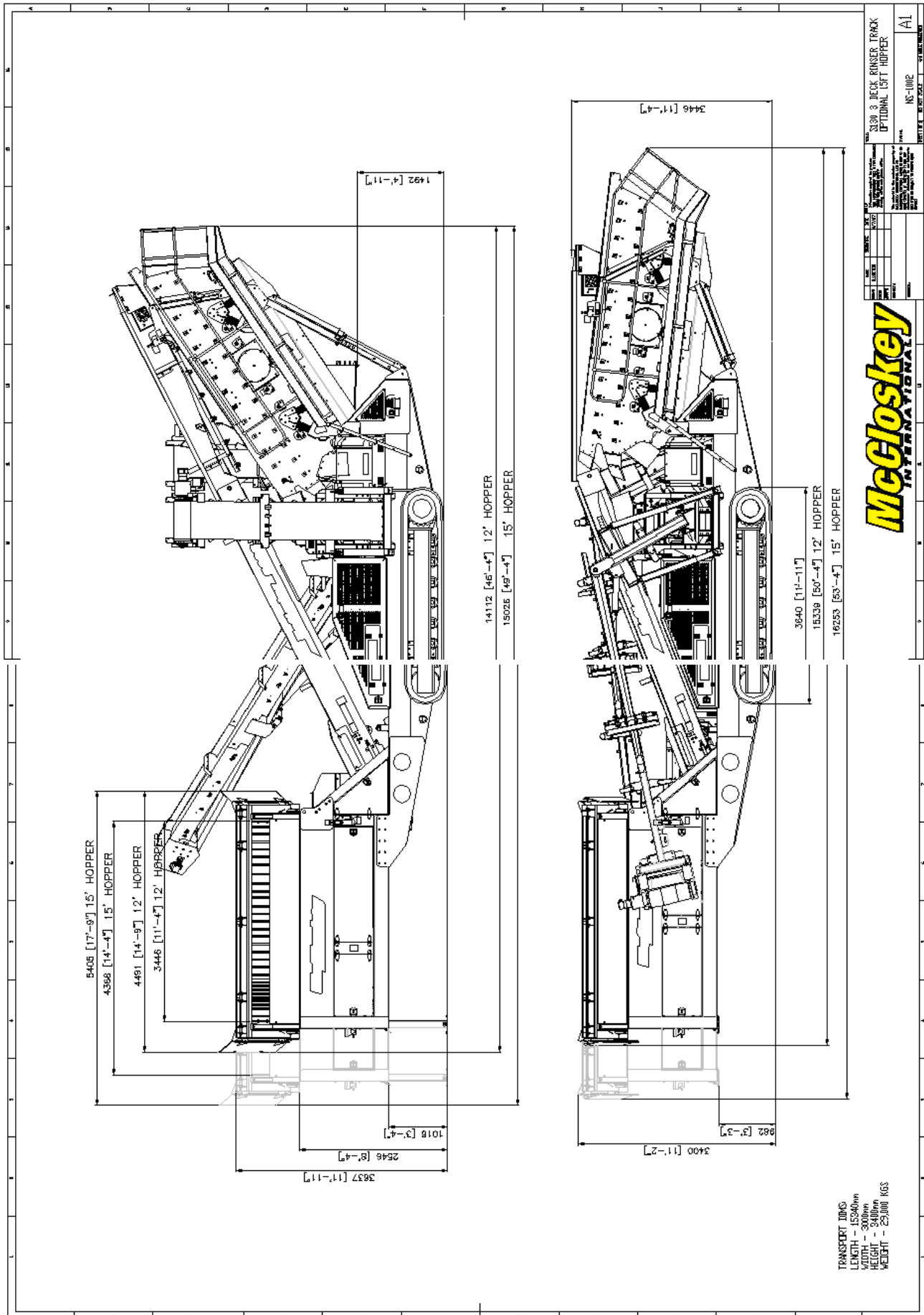
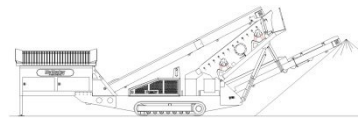


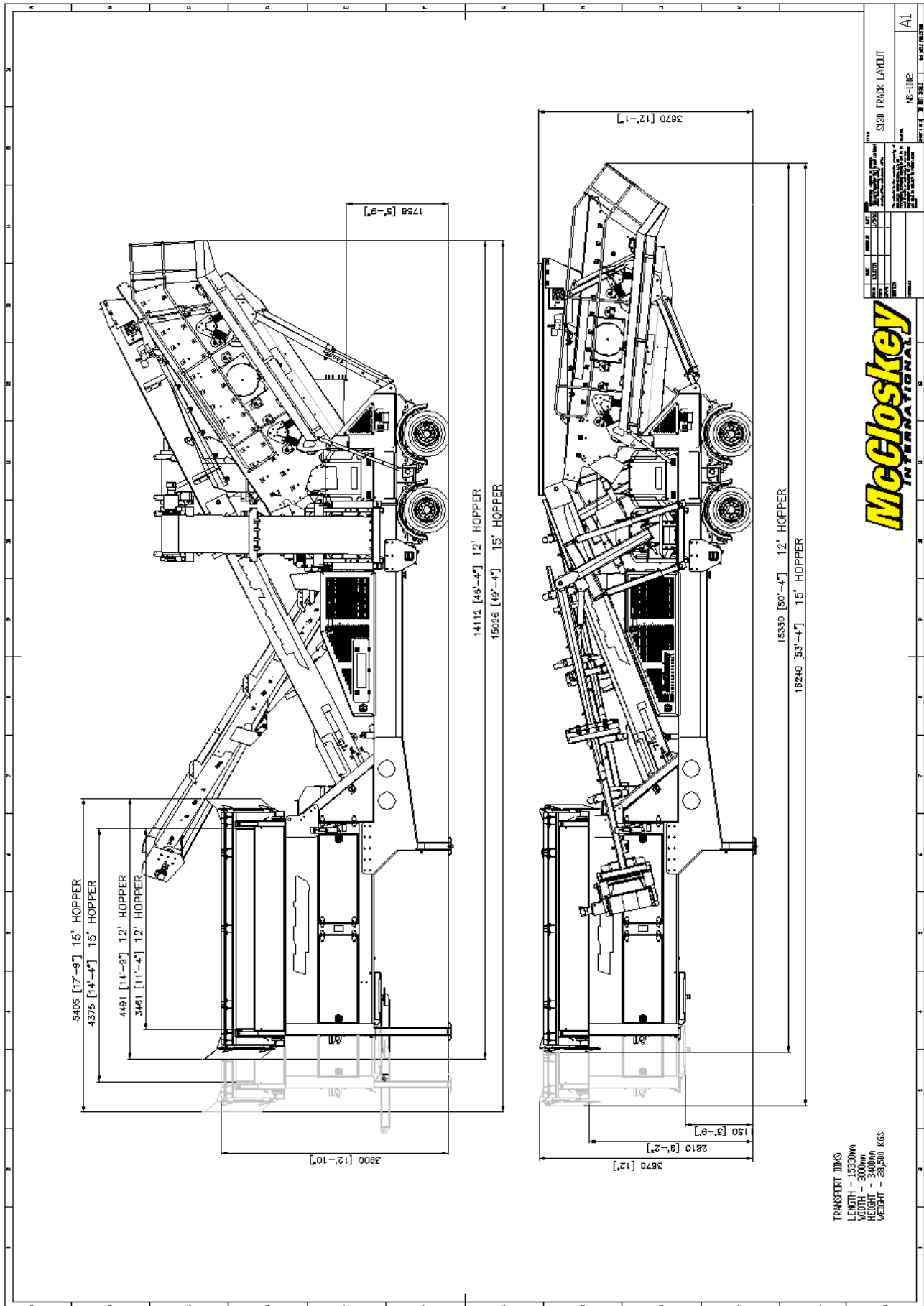
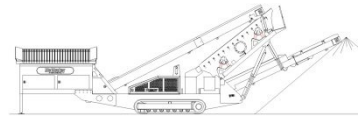
OPTIONS

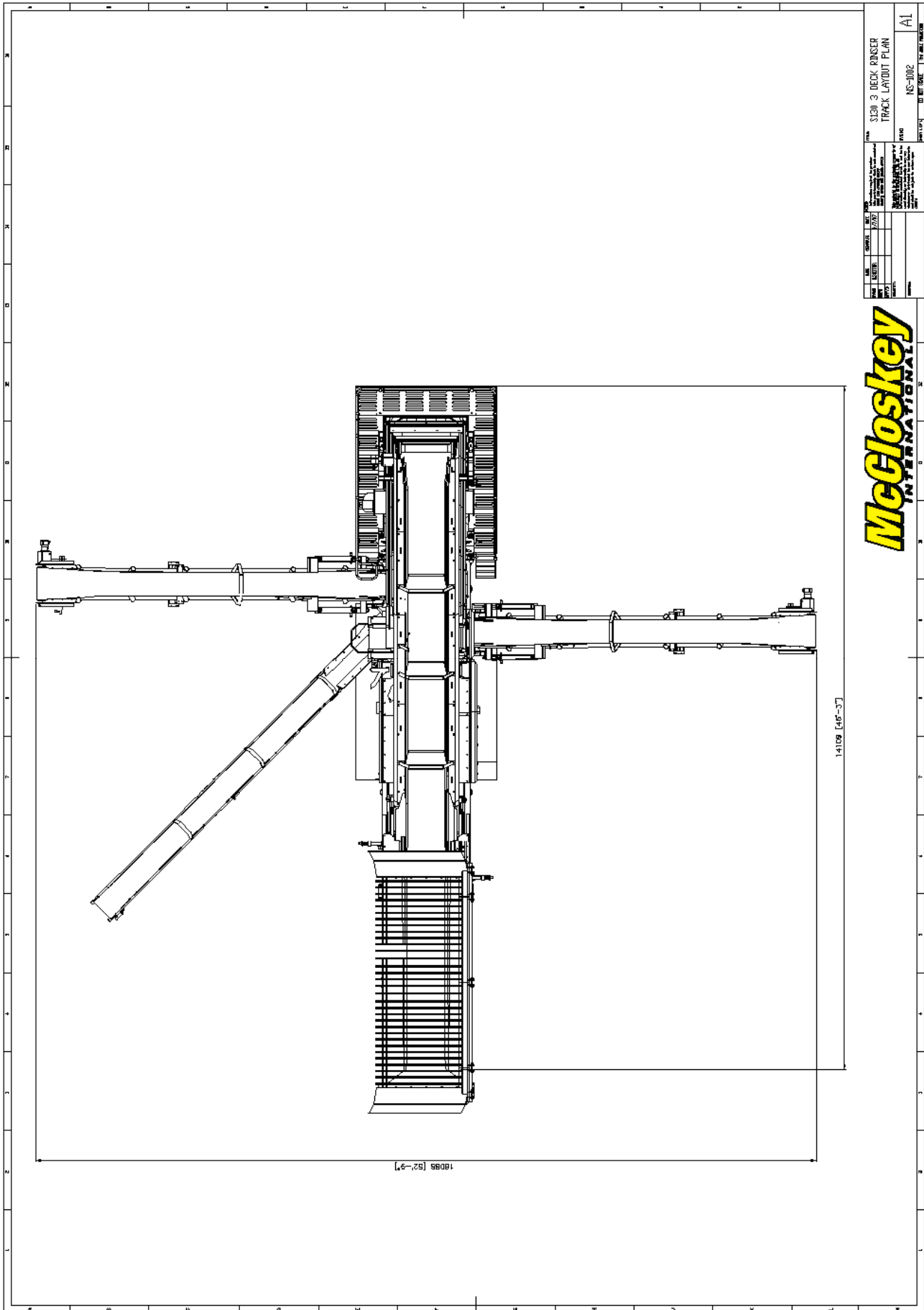
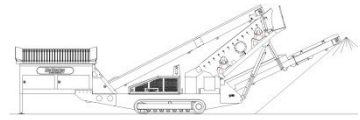
Single or double deck live head
Roll-in bogie system
Single shaft shredder
2 Deck Rinsers
Crusher chute (available with 15ft hopper only)
Radio remote control

SAFETY FEATURES

External belt alignment points
External grease points
Engine safety shutdown systems
Full safety guarding for nip points







McCloskey
INTERNATIONAL

S130 3 DECK RINSE TRACK LAYOUT PLAN		A1
REV	DATE	BY
1	04/11/13	NS-002
2	04/11/13	NS-002
3	04/11/13	NS-002
4	04/11/13	NS-002
5	04/11/13	NS-002
6	04/11/13	NS-002
7	04/11/13	NS-002
8	04/11/13	NS-002
9	04/11/13	NS-002
10	04/11/13	NS-002
11	04/11/13	NS-002
12	04/11/13	NS-002
13	04/11/13	NS-002
14	04/11/13	NS-002
15	04/11/13	NS-002
16	04/11/13	NS-002
17	04/11/13	NS-002
18	04/11/13	NS-002
19	04/11/13	NS-002
20	04/11/13	NS-002
21	04/11/13	NS-002
22	04/11/13	NS-002
23	04/11/13	NS-002
24	04/11/13	NS-002
25	04/11/13	NS-002
26	04/11/13	NS-002
27	04/11/13	NS-002
28	04/11/13	NS-002
29	04/11/13	NS-002
30	04/11/13	NS-002
31	04/11/13	NS-002
32	04/11/13	NS-002
33	04/11/13	NS-002
34	04/11/13	NS-002
35	04/11/13	NS-002
36	04/11/13	NS-002
37	04/11/13	NS-002
38	04/11/13	NS-002
39	04/11/13	NS-002
40	04/11/13	NS-002
41	04/11/13	NS-002
42	04/11/13	NS-002
43	04/11/13	NS-002
44	04/11/13	NS-002
45	04/11/13	NS-002
46	04/11/13	NS-002
47	04/11/13	NS-002
48	04/11/13	NS-002
49	04/11/13	NS-002
50	04/11/13	NS-002
51	04/11/13	NS-002
52	04/11/13	NS-002
53	04/11/13	NS-002
54	04/11/13	NS-002
55	04/11/13	NS-002
56	04/11/13	NS-002
57	04/11/13	NS-002
58	04/11/13	NS-002
59	04/11/13	NS-002
60	04/11/13	NS-002
61	04/11/13	NS-002
62	04/11/13	NS-002
63	04/11/13	NS-002
64	04/11/13	NS-002
65	04/11/13	NS-002
66	04/11/13	NS-002
67	04/11/13	NS-002
68	04/11/13	NS-002
69	04/11/13	NS-002
70	04/11/13	NS-002
71	04/11/13	NS-002
72	04/11/13	NS-002
73	04/11/13	NS-002
74	04/11/13	NS-002
75	04/11/13	NS-002
76	04/11/13	NS-002
77	04/11/13	NS-002
78	04/11/13	NS-002
79	04/11/13	NS-002
80	04/11/13	NS-002
81	04/11/13	NS-002
82	04/11/13	NS-002
83	04/11/13	NS-002
84	04/11/13	NS-002
85	04/11/13	NS-002
86	04/11/13	NS-002
87	04/11/13	NS-002
88	04/11/13	NS-002
89	04/11/13	NS-002
90	04/11/13	NS-002
91	04/11/13	NS-002
92	04/11/13	NS-002
93	04/11/13	NS-002
94	04/11/13	NS-002
95	04/11/13	NS-002
96	04/11/13	NS-002
97	04/11/13	NS-002
98	04/11/13	NS-002
99	04/11/13	NS-002
100	04/11/13	NS-002