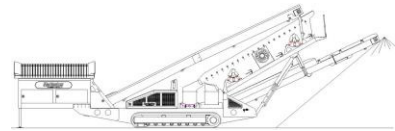


6 5 L Q V H U

6 3 (& ,) , & \$ 7 , 2 1 6



DESCRIPTION

Heavy duty mobile screener with following features:

- 20x5 heavy duty high energy 2 bearing rinsers screenbox.
- 131Hp Cat engine.
- Track or wheel mobile.
- Integrated hydraulic folding stockpiling conveyors.
- On the 3 deck 3rd Deck auxiliary conveyor attaches to machine for one unit transport.
- Remote control tipping grid.
- Fast on site setup time – 10 minutes (2 Deck machine).
- Recommended flow and pressure
 - o 4100 to 6100 lpm (1100 to 1600 us gal/min)
 - o 2 bar (30 psi) at manifold

DIMENSIONS AND WEIGHTS

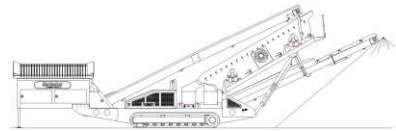
Length - transport 15ft hopper	18.2 (59' - 8")
Length - transport 12ft hopper	17.54m (56' - 8")
Width – 2 deck	2.9m (9' - 6")
Width – 500mm wide conveyor	3.06m (10')
Width – 650 wide conveyor	3.22m (10'7")
Height - transport track Height	3.45m (11' - 4")
- transport wheel Weight – 2 deck track	3.68m (12' - 1")
Weight – 3 deck track	36,000 Kgs (79,366 lbs) - estimated
Weight – 2 deck wheel Weight	36,500 Kgs (80,468 lbs) - estimated
- 3 deck wheel	31,000 Kgs (68,343 lbs) - estimated
	33,000 Kgs (72,752 lbs) - estimated

CAPACITIES

Diesel tank capacity	399 L (105 US gal)
Hydraulic tank capacity	630 L (166 US Gals)
Capacity - 12ft hopper	8.01 m ³ (10.48 yd ³)
Capacity - 15ft hopper	10.01 m ³ (13.09 yd ³)

FEED CONVEYOR

Belt width	1200mm (48")
Belt spec	Plain 500/3 6+3
Drive drum dia.	335mm (13.1")
Tail drum dia.	320mm (12.5")
Gearbox Gearbox ratio	Bonfig 805 W2
torque Motor	24.2
Flow rate	7000Nm cont, 12500Nm max
Adjustable speed	Danfoss OMSS160
Maximum speed	72.6 Lpm (19.2 US gpm) YES
	18.75 rpm



MAIN CONVEYOR

Belt width	1050mm (42")
Belt spec	Plain 400/3 4+2
Drive drum dia.	285mm (11.2")
Tail drum dia.	270mm (10.6")
Motor	Danfoss OMV800
Flow rate	101.2 Lpm (26.7 US gpm)
Adjustable speed	OPTION
Maximum speed	126.5 rpm

SIDE CONVEYOR

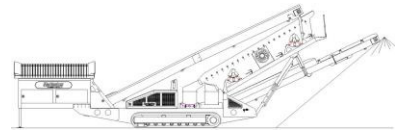
Stockpile height - track model	5100mm (16' - 9")
Stockpile height - wheel model	5370mm (17' - 7")
Belt width	800mm (32")
Belt spec	Chevron - 400/3 6+1.5
Drive drum dia.	285mm (11.2")
Tail drum dia.	270mm (10.6") OMT400
Motor	50.6 Lpm (13.4 US gpm)
Flow rate	YES
Adjustable speed	126.5 rpm
Maximum speed	

3 DECK TRANSFER CONVEYOR (3 deck only)

Belt width	650mm (26")
Belt spec	Plain 400/3 4+2 200mm
Drive drum dia.	(8")
Tail drum dia.	200mm (8")
Motor	OMT400
Flow rate	50.6 Lpm (13.4 US gpm)
Adjustable speed	YES
Maximum speed	126.5 rpm

3 DECK AUXILLARY CONVEYOR (3 deck only)

Stockpile height - track model	4700mm (15.5')
Belt width	650mm (26")
Belt spec	Chevron - 400/3 6+1.5
Drive drum dia.	290mm (11.5")
Tail drum dia. (Spoked) Motor	270mm (10.6") OMT400
Flow rate	50.6 Lpm (13.4 US gpm)
Adjustable speed	YES
Maximum speed	126.5 rpm



SCREENBOX

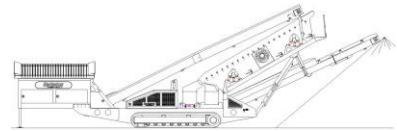
Dimensions - top deck	6100mm x 1524mm (20' x 5')
Dimensions - middle deck (3 deck only)	6100mm x 1524mm (20' x 5')
Dimensions - bottom deck Bearing type 3 Deck	5490mm x 1524mm (18' x 5') NSK 130mm bore
Screens - top deck	5' x 4' side tension - 5 off
Screens - middle deck(3 deck only)	5' x 4' side tension - 5 off
Screens - bottom deck	5' x 6' end tension - 3 off
Screens option	Polydeck modular mats
Tensioning - top deck	Quick release pin and wedge
Tensioning - middle deck	Quick release pin and wedge
Tensioning - bottom deck	Curved tension bar and adjuster
Screen angle	20 to 30 deg (20 deg optimum rinsing)
Screen motor	DBH MCC2213 (85.7cc/rev)
Drive system	Direct drive with HRC180 coupling
Hydraulic flowrate	101.2 Lpm (26.7 US gpm)
Speed adjustable	YES - Pressure compensated FCV
Screen stroke adjustable	6 - 10mm maximum
Screen shaft speed	1130 - 950 rpm
Screen 'g' force	4.29 - 5.05 g

POWERUNIT AND HYDRAULICS

Engine	CAT 4.4
Engine power	131 HP
Engine speed	2200 rpm
Hydraulic Oil cooler	YES

ELECTRICS

Emergency stops	6 off, 1 feeder, 2 powerunit RH&LH, 2 chassis front RH&LH, 1 Walkway
Chassis cabling Start	Armored cable
Siren	YES - 10 sec delay
Engine shutdowns:	Low oil pressure High water temp Air filter blockage (selectable) Fuel contamination Low hydraulic tank level
Engine room light	YES
Remote tipping grid	YES - 2 function timed
Radio control tracks	optional - Hetric system
Pendant track control	YES - plugged in at feeder end



TRACKS

Width	500mm (19.7")
Length	3800mm (12' - 6") crs
Height	798mm (31.4") Bonfiglioli
Gearbox	709
Ratio	148:1
Motor	Rexroth 90
Speed max	1.14 Kph (0.71 Mph) 101.2
Flow rate	Lpm (26.7 US gpm)
Dual speed	TBC
Attachment to chassis	Bolt On for quick change

RINSE KIT

Main water supply pipe	150mm (6") diameter
Wash box lining	25mm (1") rubber wear lining
Top deck spray pipes Top	8 off
deck spray nozzles Middle	60 off
deck spray pipes Middle	8 off
deck spray nozzles Bottom	60 off
deck spray pipes Bottom	8 off
deck spray nozzles Bottom	60 off
deck Catchbox Bottom	6mm (1/4") rubber lined
deck exit	255mm (10") diameter flange 2 off

WHEELS

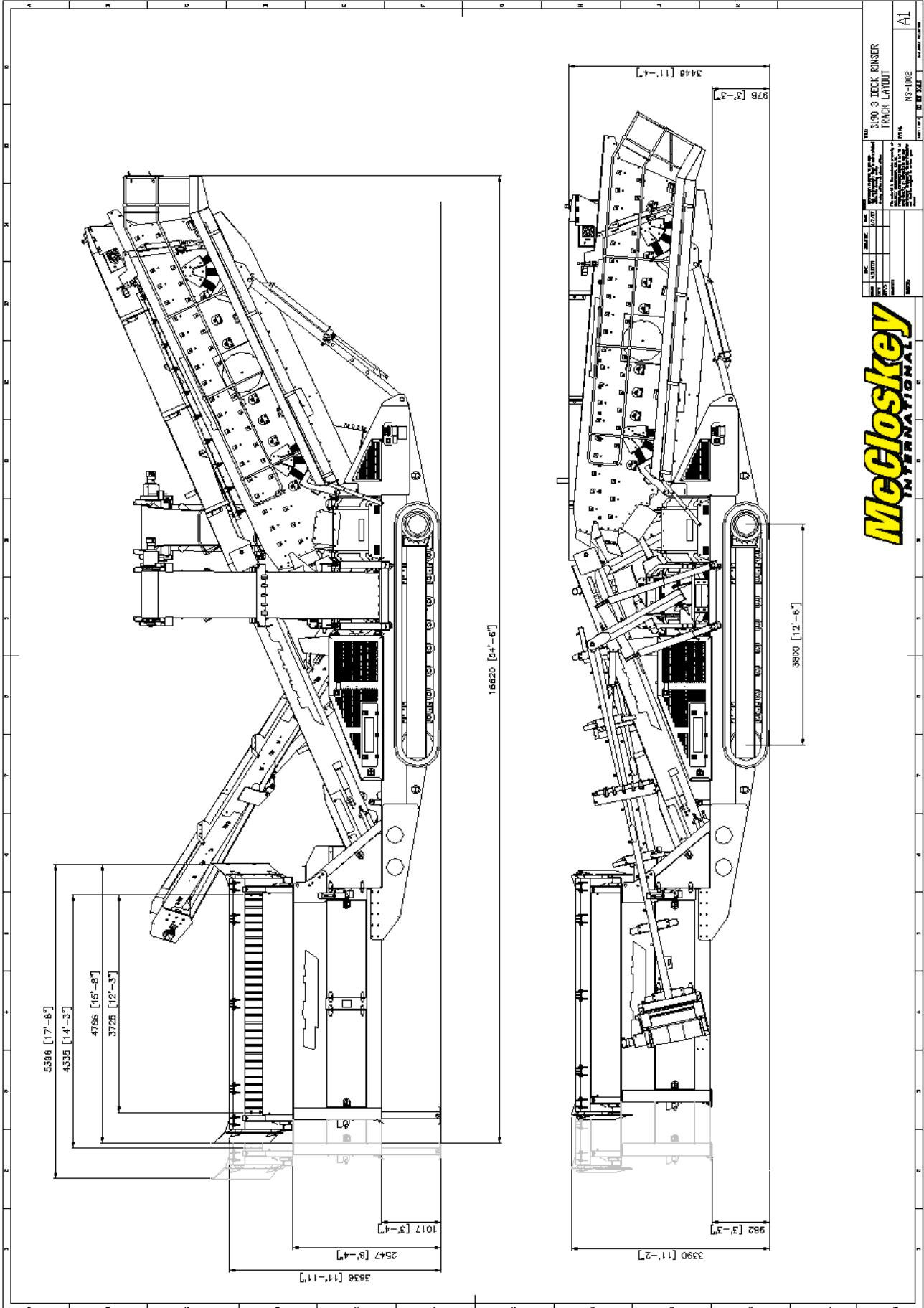
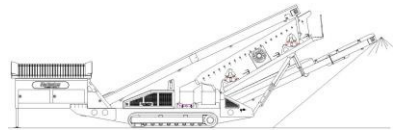
Width	2900mm (9' - 6")
Axle centers	1360mm (4' - 6")
Wheels	235/75/R17.5 dual
Axles	3 off
Brakes	YES
Spring suspension	YES
Mudguards	YES
Handbrake	OPTION
ABS	OPTION

OPTIONS

- Single or double deck live head
- Roll-in bogie system
- 15ft Hopper
- Crusher chute (available with 15ft hopper only)
- Radio remote control
- Catchbox division plate 1/3 - 2/3 or 2/3 - 1/3 or 1/2 - 1/2

SAFETY FEATURES

- External belt alignment points
- External grease points
- Engine safety shutdown systems
- Full safety guarding for nip points



DATE	BY	CHECKED	APPROVED
10/27/16	MS	MS	MS
3390.3 TRACK HARROW TRACK LAYOUT MS-1002 DATE: 10/27/16 BY: MS			

McCloskey
INTERNATIONAL

