

CHIPMAX 364T WHOLE TREE CHIPPER



A TEREX BRAND



Introducing the CBI ChipMax 364T – Engineered for Maximum Productivity and Versatility.

Built from the ground up with input from forestry and wood waste professionals, the ChipMax 364T is designed to excel in real-world applications. This industrial wood chipper offers unmatched durability, productivity, and versatility, delivering superior value and a lower total cost of ownership. Powered by either a 765hp or 550hp engine, the ChipMax 364T operates at peak efficiency, making it a powerhouse for any operation. Its 36" drum rotor, equipped with three 12" wide staggered knives, ensures precise chipping, while the improved chute geometry maximizes chip throw for efficient trailer packing. For higher-spec chip sizes, a chip accelerator can be added for even greater performance.

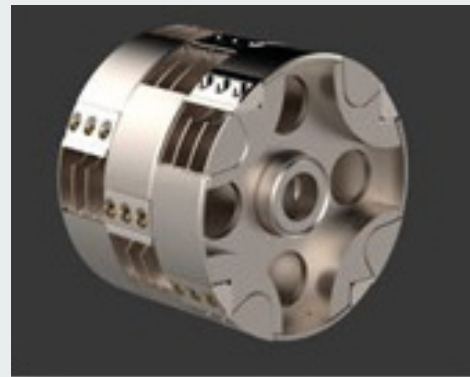
Designed with ease of maintenance in mind, the ChipMax 364T features a ground-level greasing panel and accessible serpentine belt, ensuring hassle-free upkeep. The service platform next to the engine provides ample workspace for oil checks and routine maintenance. Offering two rotor options, the 364T lets operators produce anything from consistent micro-chips to larger 30mm chips, adaptable to market demands. CBI's innovative bolt-in pockets and knife beds make switching configurations quick and easy, allowing operators to meet the needs of diverse end markets.

CHIPMAX 364T WHOLE TREE CHIPPER

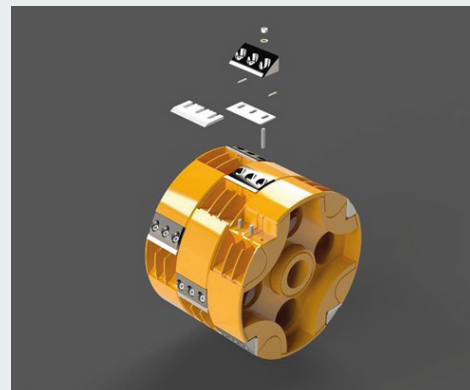
TRANSPORT DIMENSIONS	
Width	8' 4"
Height	12'
Length	27' 1"
Weight	44,000 lbs
WORKING DIMENSIONS	
Length	8' 4"
Width	12'
Feed Height	27' 1"
Discharge Height	44,000 lbs
INFEED	
Top Feed Roll	26"
Width	36"
Length	8' 4"
POWERTRAIN	
Power Unit	DC13, DC16, C18
Hydraulics	Open Loop
Fuel Tank	Dual 105 Gallon Tanks
GENERAL	
Tracks	Strickland, 400mm
Rotor	48" Diameter, 36" Wide
Controls	IQAN
Options	Work Lights, Compressor, Bottom Feed Roll
Key Features	Micro Chips through 30mm Capability
	VR, T, P, VT Versions
	550 - 770hp Options
	Tier 2, Tier 4 Final, Stage V Engines
	High Fuel Chip Quality
	Interchangeable Chip Breaker/Baffle



Infeed designed with 5" pitch chain. Bottom feed roll helps guide material to the rotor.



Microchip Rotor: 48" diameter drum cuts with four sets of three-segment knives on each revolution. Produces chip specs from 3mm to 18mm.



CBI's new removable bolt-in pockets allow users to quickly switch pockets and knife beds on the rotor and adapt to the chip size required by the market.



A TEREX BRAND

The material in this document is for information only and is subject to change without notice.

CBI assumes no liability resulting from errors or omissions in this document, or from the use of the information contained herein. Due to continual product development we reserve the right to change specifications without notice. Product performance figures given in this brochure are for guidance purposes only, this information does not constitute an expressed or implied warranty or guarantee. Results will vary depending on conveyor settings, feed source and types of material being processed.

Images are for illustrative purposes only, some or all of the machines in the illustrations may be fitted with optional extras. Please check with your Dealer for details on optional extras.

CBI is a registered trademark of Terex GB Limited in the United States of America and many other countries. Copyright 2024 Terex Published and Printed in 2024