

# TC60

TRACKED CONVEYOR



STRONG **HERITAGE**, STRONG **FUTURE**

 **FINLAY**<sup>®</sup>  
A TEREX BRAND



# TC60 TRACKED CONVEYOR

## DIMENSIONS

Transport	Length	11.87 M (38'-11")
	Width	2.24 M (7'-4")
	Height	2.69 M (8'-10")
Working @24°	Length (Overall)	17.68 M (58')
	Width	2.24 M (7'-4")
	Height (Top of Drum)	8.16 M (26'-9")
Total Weight (STD) (kg)		9,000
Maximum Tonnage		400-500 TPH (DEPENDENT ON MATERIAL AND BULK DENSITY)
Maximum Feed Size		150 MM (DEPENDENT ON MATERIAL AND BULK DENSITY)

## GENERAL

- Full dog lead remote control
- Galvanised legs
- Check valve built into legs
- 2.9 M Heavy duty crawler track
- Optional engines



## FEEDBOOT

Standard Capacity	1.3 M³ (1.7 YD³)
Extended Capacity	2.6 M³ (3.4 YD³)
Standard Feed In Width	1.73 M (5'-8")
Extended Feed In Width	1.73 M (5'-8")
Standard Minimum Feed In Height @24°	1.28 M (4'-2")
Extended Minimum Feed In Height @24°	1.28 M (4'-2")

## CONVEYORS

Width	900 MM (36")
Belt Centres	18.3 M (50')
Belt Type (Plain/Chevron)	PLAIN (CHEVRON OPTIONS)
Belt Spec	EP 300 3PLY
Drive Drum Diameter	344 MM (14")
Tail Drum Diameter	275 MM (11")
Max Belt Speed of Conveyor	3 M/SEC
Motor Size & type	500CC
Operating Angle	0-24°
Variable Speed (Y/N)	YES

Discharge Height @ 10°	4.68 M (15'-4")
Stockpile Capacity @ 10° & 37° Angle of Repose	189.7 M³ (247 YD³)
Discharge Height @ 12°	5.2 M (17'-0")
Stockpile Capacity @ 12° & 37° Angle of Repose	260 M³ (340 YD³)
Discharge Height @ 14°	5.7 M (18'-8")
Stockpile Capacity @ 14° & 37° Angle of Repose	341.5 M³ (447 YD³)
Discharge Height @ 16°	6.2 M (20'-4")
Stockpile Capacity @ 16° & 37° Angle of Repose	440 M³ (575 YD³)
Discharge Height @ 18°	6.7 M (21'-11")
Stockpile Capacity @ 18° & 37° Angle of Repose	555 M³ (726 YD³)
Discharge Height @ 20°	7.2 M (23'-7")
Stockpile Capacity @ 20° & 37° Angle of Repose	688 M³ (900 YD³)
Discharge Height @ 22°	7.68 M (25'-2")
Stockpile Capacity @ 22° & 37° Angle of Repose	835 M³ (1093 YD³)
Discharge Height @ 24°	8.16 M (26'-9")
Stockpile Capacity @ 24° & 37° Angle of Repose	1002 M³ (1311 YD³)



# TC60 TRACKED CONVEYOR

## MAIN CONVEYOR

Heavy duty head and tail drums.  
Varied angle roller sets.  
Impact bars on tail section.  
Hydraulic folding head section.  
Full side skirting.

## POWER UNIT & HYDRAULICS

### T3 Engine

Engine Type and Power Rating	CAT 2.2 37KW
RPM	2800 RPM MAX
Crankshaft Pump	33cc
PTO Pump	None

### T4F Engine

Engine Type and Power Rating	CAT 1.7 TIER 4 STAGE V - 37KW
RPM	2800 RPM MAX
Crankshaft Pump	33cc
PTO Pump	None

### Stage V Engine

Engine Type and Power Rating	CAT 1.7 TIER 4 STAGE V - 37KW
RPM	2800 RPM MAX
Crankshaft Pump	33cc
PTO Pump	None

### Tank Capacities

Diesel Tank Capacity	228 LT (60 US GALLON)
Hydraulic Tank Capacity	290 LT (77 US GALLON)



## TRACKS

Shoe Width (mm)	400
Sprocket Centre (mm)	2909
Speed (KM/H) (Low)	1.5
Speed (KM/H) (High) / Or Single Speed	2.7



## OPTIONS

Dual Power (Electric/Hydraulic/Diesel/Hydraulic)  
Heavy Duty 4 Ply Belt  
Chevron Belt C15  
Chevron Belt C25

Front extensions for feed boot  
Rubber Lined Extended Feedboot 10mm  
Rubber Lined Extended Feedboot 35mm  
Hardox Lined Extended Feedboot 6mm

Cordless Remote Control Tracks  
Under Guarding Cover ( up to 8ft )

Basket guards  
Manual Jacking Leg System  
Anti Roll Back Flaps (3 off)

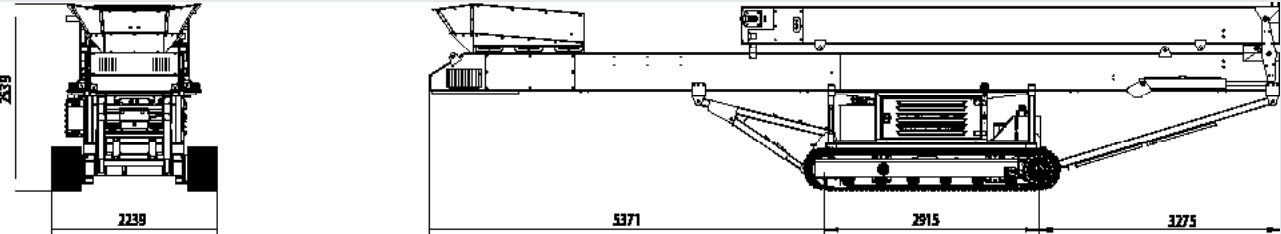
CAT 1.7 STAGE V 37KW  
CAT 2.8 STAGE V 55KW pumps upgraded and motors

Twin drive - 2 off OMV 400 motors - needs to have a larger engine

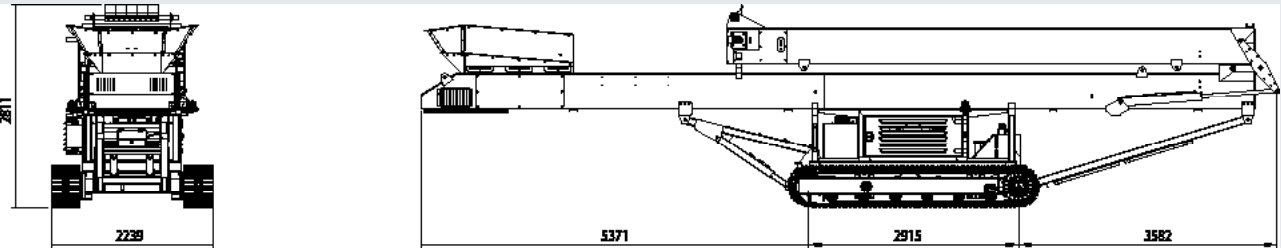
# TC60 TRACKED CONVEYOR

## TRANSPORT

Transport Container

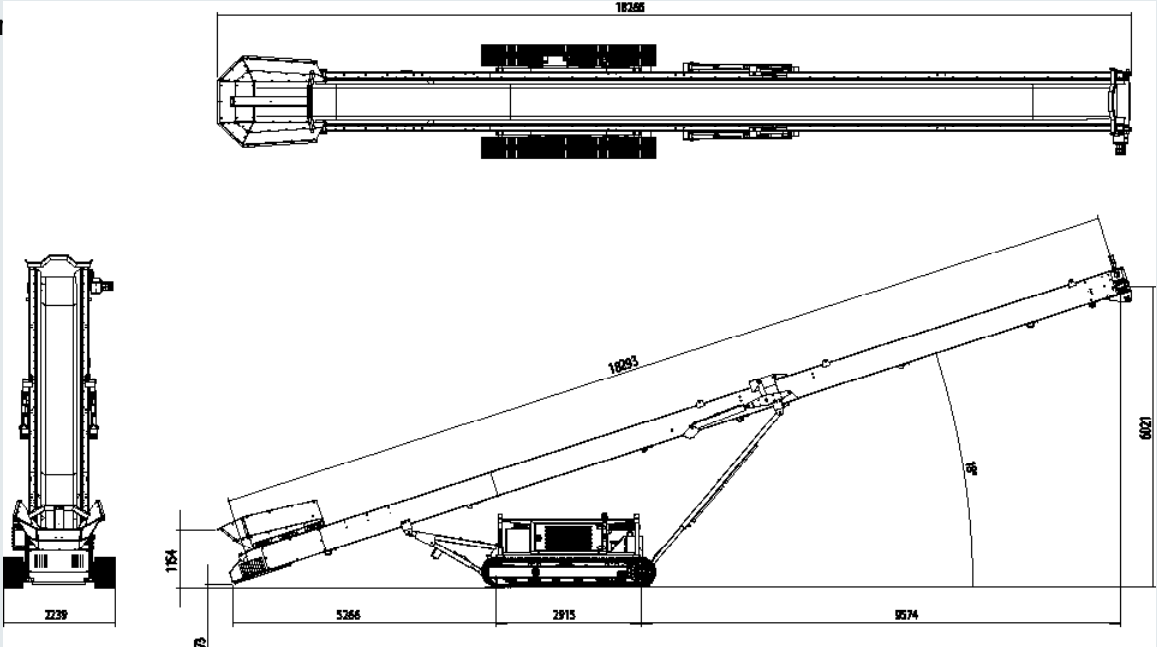


Transport Road

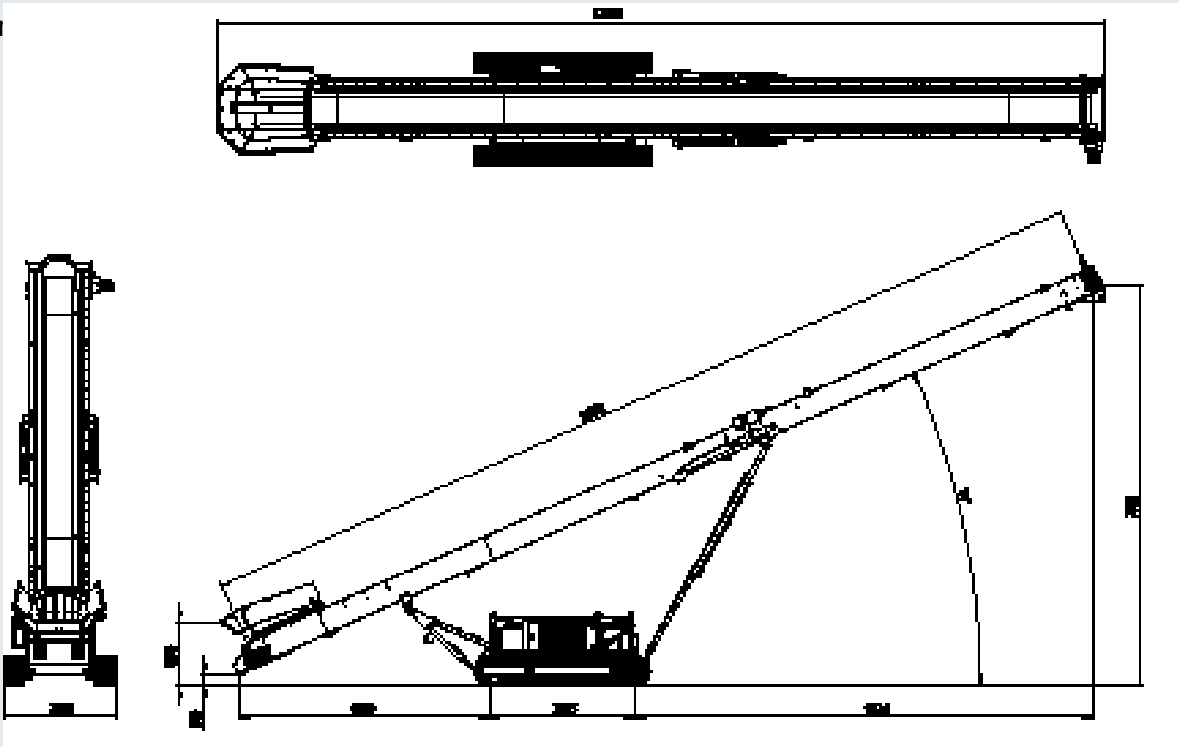


## WORKING

Working



Working





The material in this document is for information only and is subject to change without notice.

Finlay® assumes no liability resulting from errors or omissions in this document, or from the use of the information contained herein.

Due to continual product development we reserve the right to change specifications without notice. Product performance figures given in this brochure are for guidance purposes only, this information does not constitute an expressed or implied warranty or guarantee, but shows test examples. These results will vary depending on application. Photographs are for illustrative purposes only; some or all of the machines in the illustrations may be fitted with optional extras. Please check with your Dealer for details on optional extras.

Published and Printed in 2025